

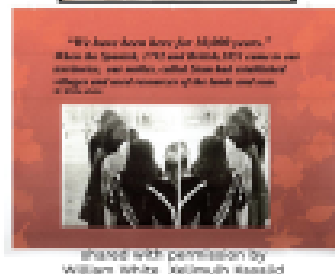
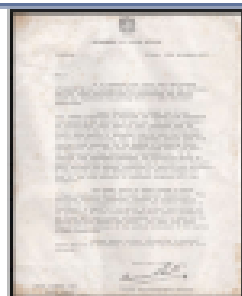
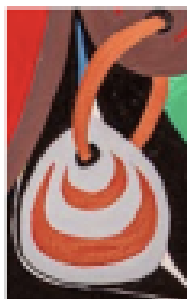
We now invite you to explore Seeing Through Watchers' Eyes try a [guide](#) to for linear viewing

[Seeing Through Watchers Eyes – Between the Worlds](#) is an online interactive learning tool that tells the story of the land where the mural lives. Built using the Prezi platform by kQwa'st'not working collaboratively with many community partners including Sierra Club BC, is a publicly shared, culturally rich Indigenous learning tool that hopes to engage community learners of all ages and backgrounds to see through another's eyes.

We invite you to begin with these few area:

1) Consider your deep thoughts around sense of value. Point # 163 invites a look through another's eyes. We also invite you to engage with this curriculum around [value](#).

..the shell earring represents wealth
..our complex tay'la system was at odds with the newcomers
..interconnected set of community values was likely not comfortable for the newcomers
..the differences in our values resulted in big changes
..how do we reconcile while keeping the integrity of our Indigenous values?



ALBERTA VALLEY NEWS ARTICLE
<https://www.albertavalleynews.com/news/canadian-unity-presses-unique-coin-designed-by-island-artist/>

© kQwa'st'not 2019

shared with permission by William White, Kelmuth, Skeelid

2) Protocol through learning about Fishing technology. We invite you to explore point # 262 and to watch this [video](#).

Consider:

- How does this teach us about protocol?
- How can you support this?
- This technology was a gift from the Creator and from the Salmon People, what can we learn about from this?
- What might it mean for all W̱SÁNEĆ to be reef net fishing people again?

3) 'Why everything in creation is connected' is at point # 276

4) Turn Point for TMX through an Eagle's Perspective at points # 260/261

Hyjka for you work so far!

We now invite you to think and talk about the following big questions:

- What does protocol look like on the lands you currently live?
- What can you do to actively follow protocol/the thinking behind protocol?
- What are some ways to deepen understanding and calls to action set out by the Truth and Reconciliation Commission?
- What does evaluation look like? Whose set of values is more important? How can we include more than one way?
- What does it mean to be an ally?